

ID NO.

Error! AutoText entry not defined.

ISSUE
2

SHEET
1 of 1

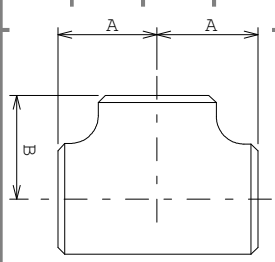
DOC.NO.

BN-DS-C6

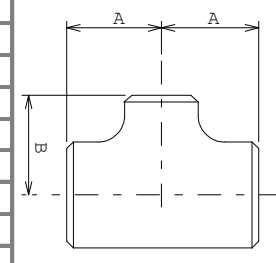
ANSI STANDARD
WELDING TEES

	A	1/2"	3/4"	1"	1 1/4"	1 1/2"	2"	2 1/2"	3"	3 1/2"	4"	5"	6"	8"	10"	12"	14"	16"	18"	20"	24"	
1"	38	38	38	38																		
1 1/4"	48	48	48	48	48																	
1 1/2"	57	57	57	57	57	57																
2"	64		44	51	57	60	64															
2 1/2"	76			57	64	67	70	76														
3"	86				70	73	76	82	86													
3 1/2"	95					79	82	89	92	95												
4"	105					86	89	95	98	102	105											
5"	124						105	108	111	114	118	124										
6"	143							121	124	127	130	137	143									
8"	178									152	156	162	168	178								
10"	216										184	191	194	203	216							
12"	254											216	219	228	241	254						
14"	279												238	248	257	270	279					
16"	305												263	273	283	295	305	305				
18"	343													298	308	321	330	330	343			
20"	381													324	333	346	356	356	368	381		
24"	432														384	397	406	406	419	432	432	

	A	1/2"	3/4"	1"	1 1/4"	1 1/2"	2"	2 1/2"	3"	3 1/2"	4"	5"	6"	8"	10"	12"	14"	16"	18"	20"	24"	
1"	1 1/2"	1 1/2"	1 1/2"	1 1/2"																		
1 1/4"	1 7/8"	1 7/8"	1 7/8"	1 7/8"	1 7/8"																	
1 1/2"	2 1/4"	2 1/4"	2 1/4"	2 1/4"	2 1/4"	2 1/4"																
2"	2 1/2"		1 3/4"	2"	2 1/4"	2 3/8"	2 1/2"															
2 1/2"	3"			2 1/4"	2 1/2"	2 5/8"	2 3/4"	3"														
3"	3 3/8"				2 3/4"	2 7/8"	3"	3 1/4"	3 3/8"													
3 1/2"	3 3/4"					3 1/8"	3 1/4"	3 1/2"	3 5/8"	3 3/4"												
4"	4 1/8"					3 3/8"	3 1/2"	3 3/4"	3 7/8"	4"	4 1/8"											
5"	4 7/8"						4 1/8"	4 1/4"	4 3/8"	4 1/2"	4 5/8"	4 7/8"										
6"	5 5/8"							4 3/4"	4 7/8"	5"	5 1/8"	5 3/8"	5 5/8"									
8"	7"									6"	6 1/8"	6 3/8"	6 5/8"	7"								
10"	8 1/2"										7 1/4"	7 1/2"	7 5/8"	8"	8 1/2"							
12"	10"											8 1/2"	8 5/8"	9"	9 1/2"	10"						
14"	11"												9 3/8"	9 3/4"	10 1/8"	10 5/8"	11"					
16"	12"													10 3/8"	10 3/4"	11 1/8"	11 5/8"	12"	12"			
18"	13 1/2"														11 3/4"	12 1/8"	12 5/8"	13"	13"	13 1/2"		
20"	15"															12 3/4"	13 1/8"	13 5/8"	14"	14"	14 1/2"	15"
24"	17"																15 1/8"	15 5/8"	16"	16"	16 1/2"	17"



EQUAL TEE



REDUCING TEE

NOTE :
 FIGURES ABOVE THE HEAVY LINE ARE DIMENSION "B" FOR EQUAL TEES
 FIGURES BELOW THE HEAVY LINE ARE DIMENSION "B" FOR UNEQUAL TEES (REDUCING TEES)