

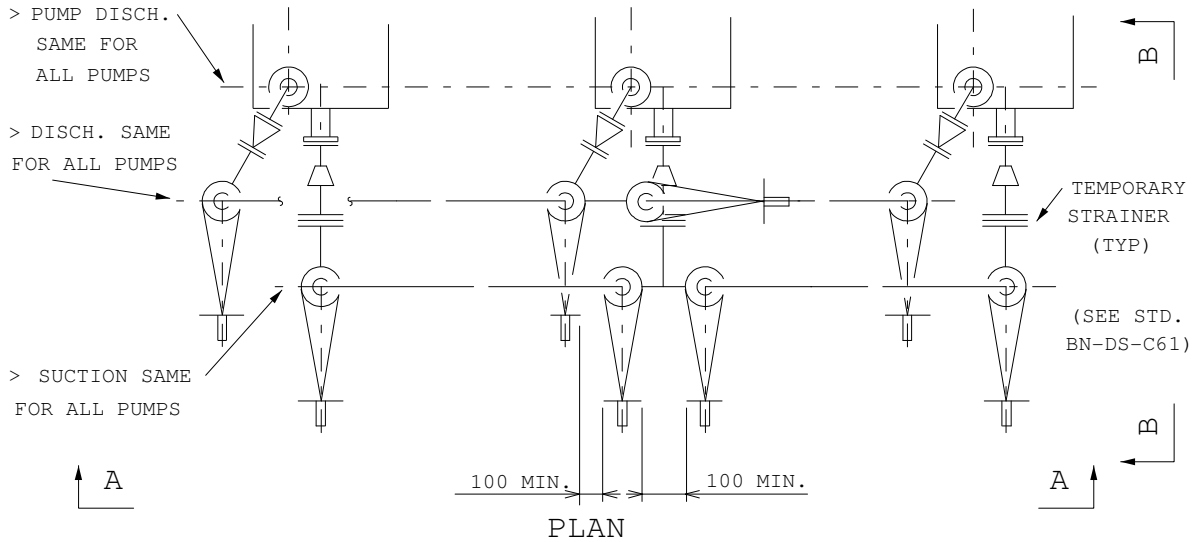
TYPICAL PUMP PIPING

1. TYPICAL PUMP PIPING AS SHOWN ON SHEETS 2, 3 AND 4 SHALL BE USED AS COMPANY STANDARD. THESE STANDARDS SHALL BE USED ON ALL JOBS WHERE THE CLIENT DOES NOT HAVE AN EXPLICIT PUMP PIPING STANDARD THAT CONFLICTS WITH THIS STANDARD.
2. SHEET 2 SHALL BE USED IN ALL CASES EXCEPT THOSE STATED IN PARAGRAPH NO. 3.
3. SHEET 3 SHALL BE USED :
 - A. WHEN THE NATURE OF THE MATERIAL BEING PUMPED IS SUCH THAT IT WILL BECOME VISCOUS OR SOLIDIFY WHEN IT LIES IN A DEAD LEG OF PIPE.
 - B. ON WATER LINES SUBJECT TO FREEZE-UP WHERE ELIMINATION OF THE DEAD LEG IS DESIRED IN ORDER TO AVOID STEAM TRACING.
4. IN THE CONFIGURATIONS SHOWN THE FOLLOWING HAVE BEEN CONSIDERED :
 - A. FLEXIBILITY OF PIPING
 - B. SIMPLIFICATION OF PIPE SUPPORTS
 - C. EASE OF PUMP DISMANTLING
 - D. TEMPORARY STRAINER REMOVAL
 - E. ACCESSIBILITY AND EASE OF OPERATION.
5. PRESSURE CONNECTION ON DISCHARGE LINE SHALL BE LOCATED BETWEEN CHECK VALVE AND GATE VALVE, AS CLOSE TO CHECK VALVE AS POSSIBLE TO ALLOW DRAINAGE ABOVE THE CHECK. ALTERNATE LOCATION BETWEEN PUMP NOZZLE AND CHECK VALVE.
6. VENTS AND DRAINS WHERE REQUIRED SHALL BE ADDED IN ACCORDANCE WITH JOB STANDARDS.

NOTE:

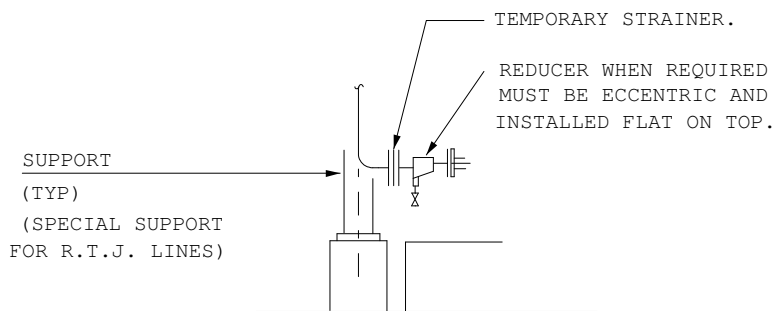
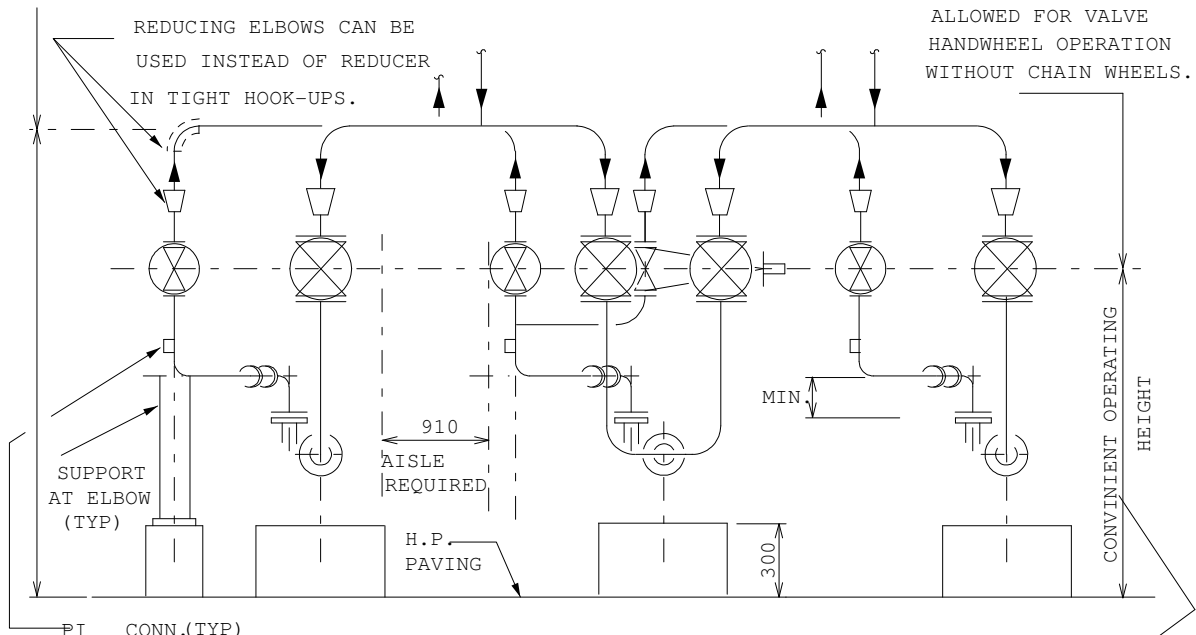
THIS SHEET TO BE USED IN CONJUNCTION WITH SHEETS 2, 3 AND 4.

INTERNATIONAL STD. BI-CDS-2M			TYPICAL PUMP PIPING	
STD. BA-CD-9M				
ID. NO.	Error! AutoText entry not defined.	ISSUE	SHEET	DOC.NO.
		2	1 of 4	BN-DS-C43



AS ESTABLISHED BY :
CLIENT'S SPEC.

IF TIGHT FOR VALVE OPERATING
AISLE SPACE, SET UP MAX. ELEVATION
ALLOWED FOR VALVE
HANDWHEEL OPERATION
WITHOUT CHAIN WHEELS.



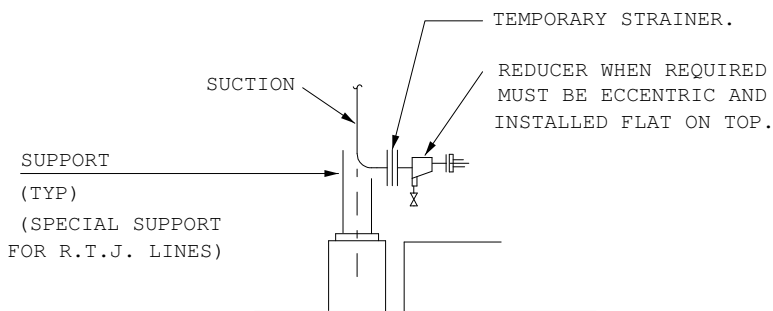
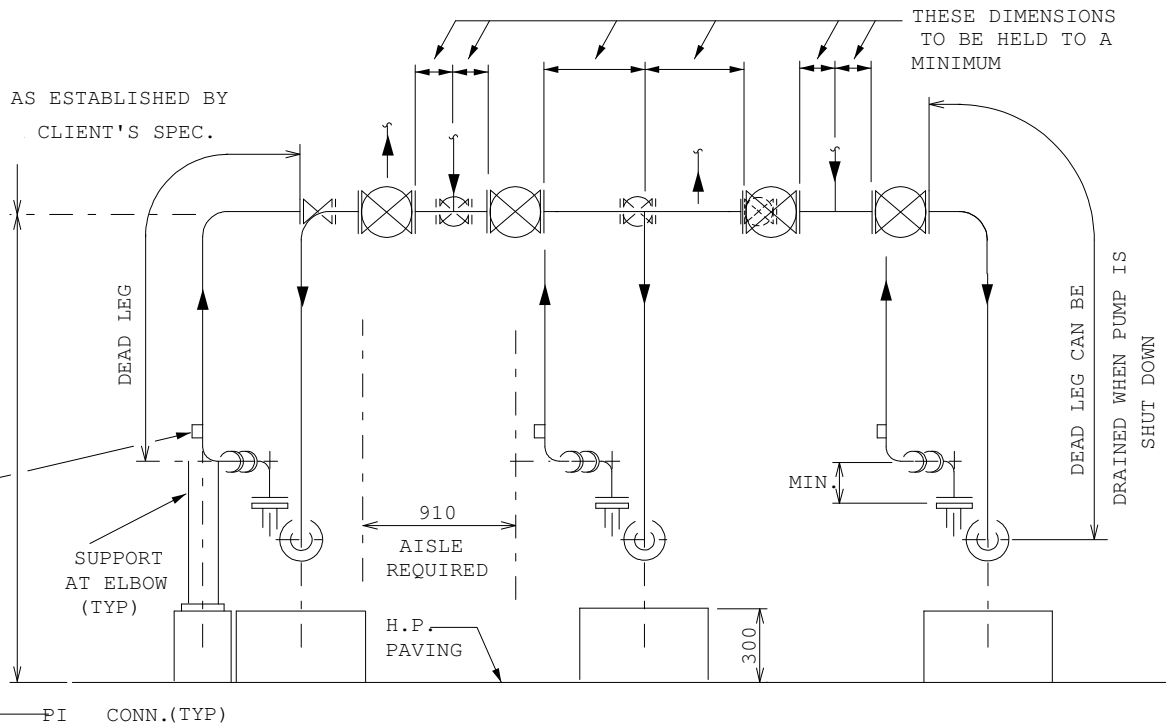
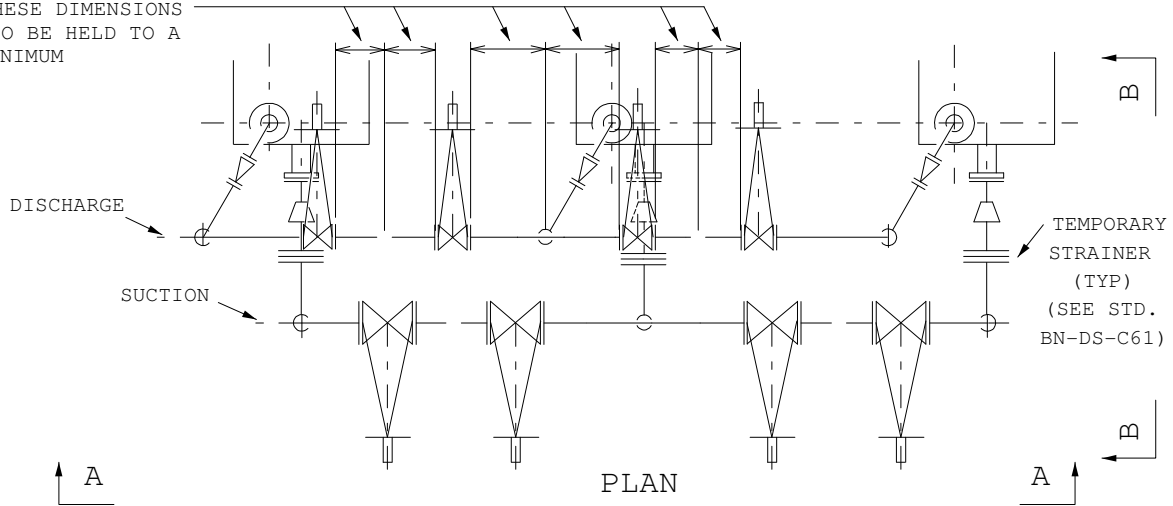
WHERE POSSIBLE
HEIGHT OF VALVES
AT ALL PUMPS TO
BE THE SAME.

NOTE :

THIS SHEET
TO BE USED IN
CONJUNCTION WITH
NOTES SHOWN ON
SHEET 1.

INTERNATIONAL STD. BI-CDS-2M				TYPICAL PUMP PIPING
STD. BA-CD-9M				
ID. NO.	Error! AutoText entry not defined.	ISSUE	SHEET	DOC.NO.
		2	2 of 4	BN-DS-C43

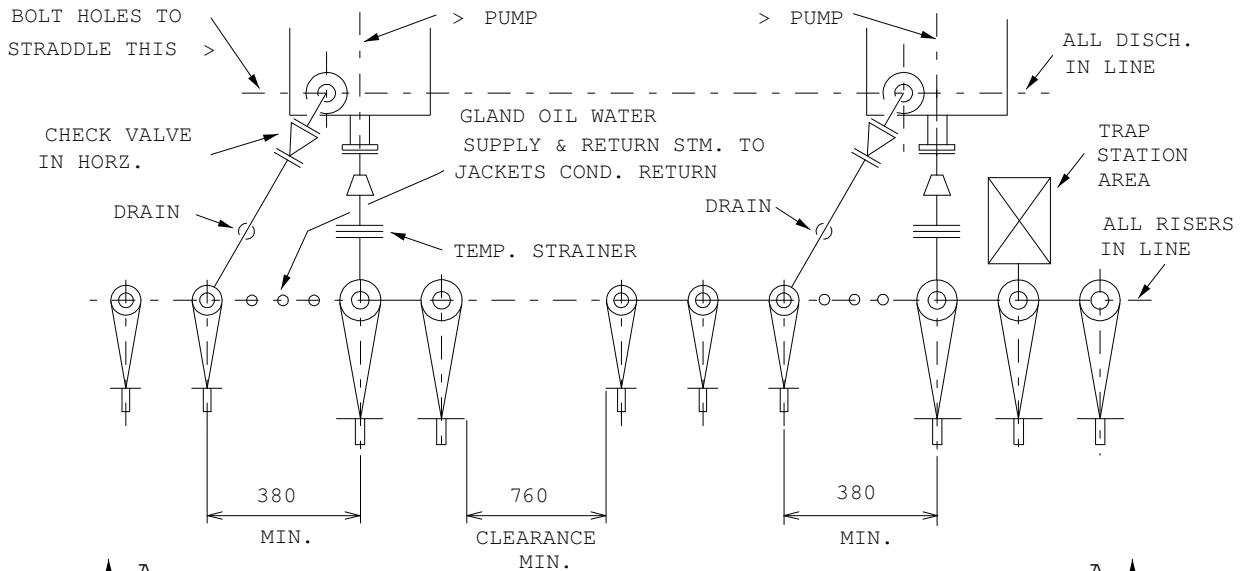
THESE DIMENSIONS TO BE HELD TO A MINIMUM



NOTE:

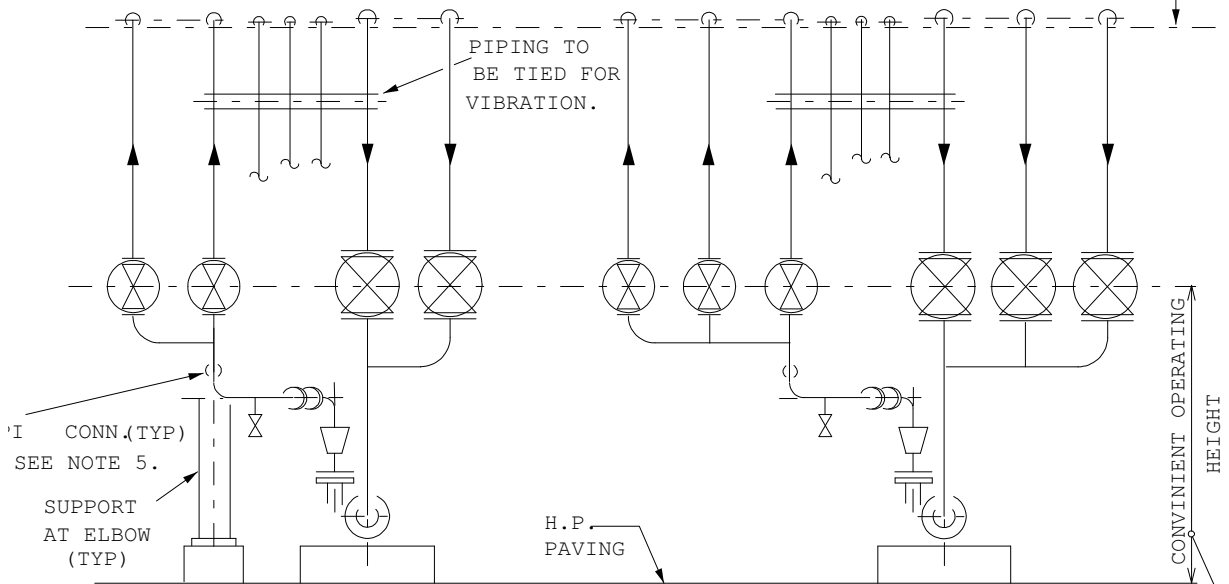
THIS SHEET TO BE USED IN CONJUNCTION WITH NOTES SHOWN ON SHEET 1.

INTERNATIONAL STD. BI-CDS-2M				TYPICAL PUMP PIPING	
STD. BA-CD-9M					
ID. NO.	Error! AutoText entry not defined.	ISSUE	SHEET	DOC.NO.	
		2	3 of 4	BN-DS-C43	



PLAN

ELEVATION TO BE IN ACCORDANCE WITH REQUIREMENTS.



ELEVATION "A-A"

WHERE POSSIBLE HEIGHT OF VALVES AT ALL PUMPS TO BE THE SAME.

NOTE:

THIS SETUP SHOULD BE USED WHEN PUMPS HAVE MULTIPLE SERVICES.

NOTE:

THIS SHEET TO BE USED IN CONJUNCTION WITH NOTES SHOWN ON SHEET 1.

INTERNATIONAL STD. BI-CDS-2M				TYPICAL PUMP PIPING
STD. BA-CD-9M				
ID. NO.	Error! AutoText entry not defined.	ISSUE	SHEET	DOC. NO.
		2	4 of 4	BN-DS-C43