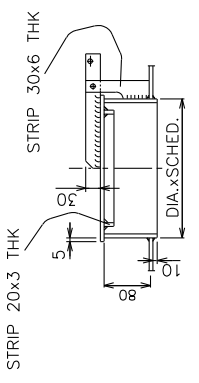
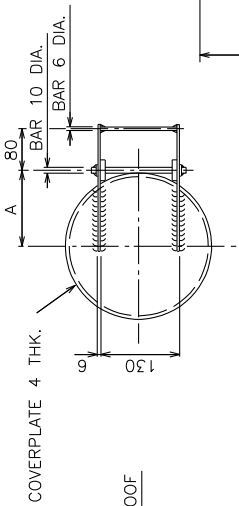


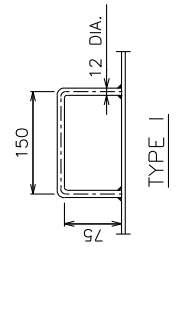
GENERAL NOTES:

1. FOR MATERIAL SPECIFICATION, MISSING DIMENSIONS AND ANY EXCEPTION TO THIS STANDARD, SEE VESSEL DRAWING.
2. ALL BURRS AND SHARP EDGES TO BE REMOVED.

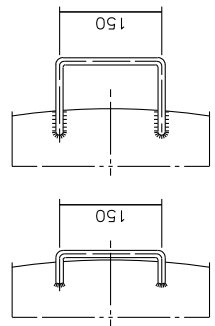


DIA. x SCHED.	A
8" PIPE SCHED. 20	130
10" PIPE SCHED. 20	150

DETAIL II
GAGE HATCH



TYPE I



HANDGRIP TYPE III

STRIP 30x3 THK

STRIP 50x6 THK

DETAIL IV

MANWAY WITH HINGED COVER

SECTION A-A

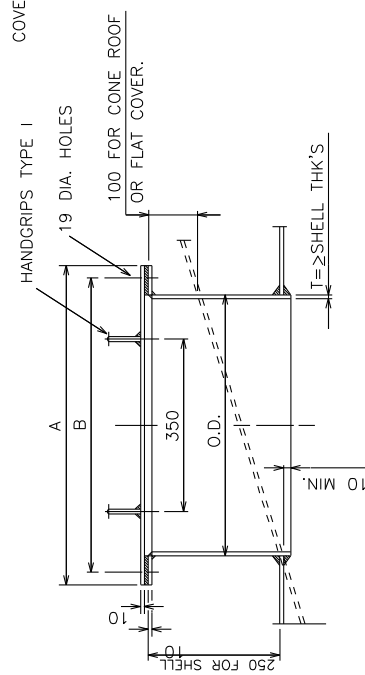
SECTION B-B

DETAIL V

MANWAY WITH HINGED COVER

SECTION A-A

SECTION B-B

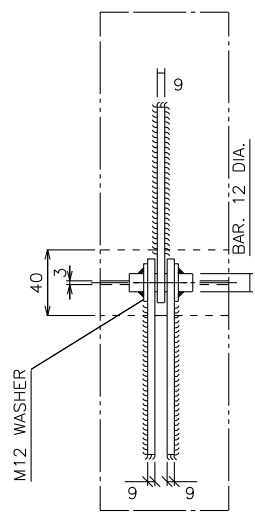


O.D.	A	B	NO. OF BOLTS	GASKET DIM'S
18"/450	570	520	16	570x450 DIA.x3THK
20"/500	620	570	16	620x500 DIA.x3THK
24"/600	720	670	20	720x600 DIA.x3THK

BOLTS M16 DIA. LENGTH 50mm

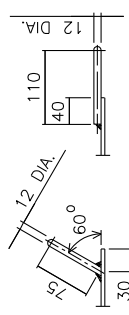
MANWAY

DETAIL I



M12 WASHER

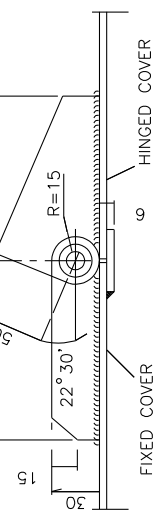
TYPICAL CONSTRUCTION DETAILS FOR NON-PRESSURE VESSELS



TYPE II

HANDGRIPS

DETAIL VI



HINGE FOR COVERS

DETAIL V

I.D.	A	B
18"/450	125	265
20"/500	150	280
24"/600	175	325

MANWAY WITH HINGED COVER

DETAIL III