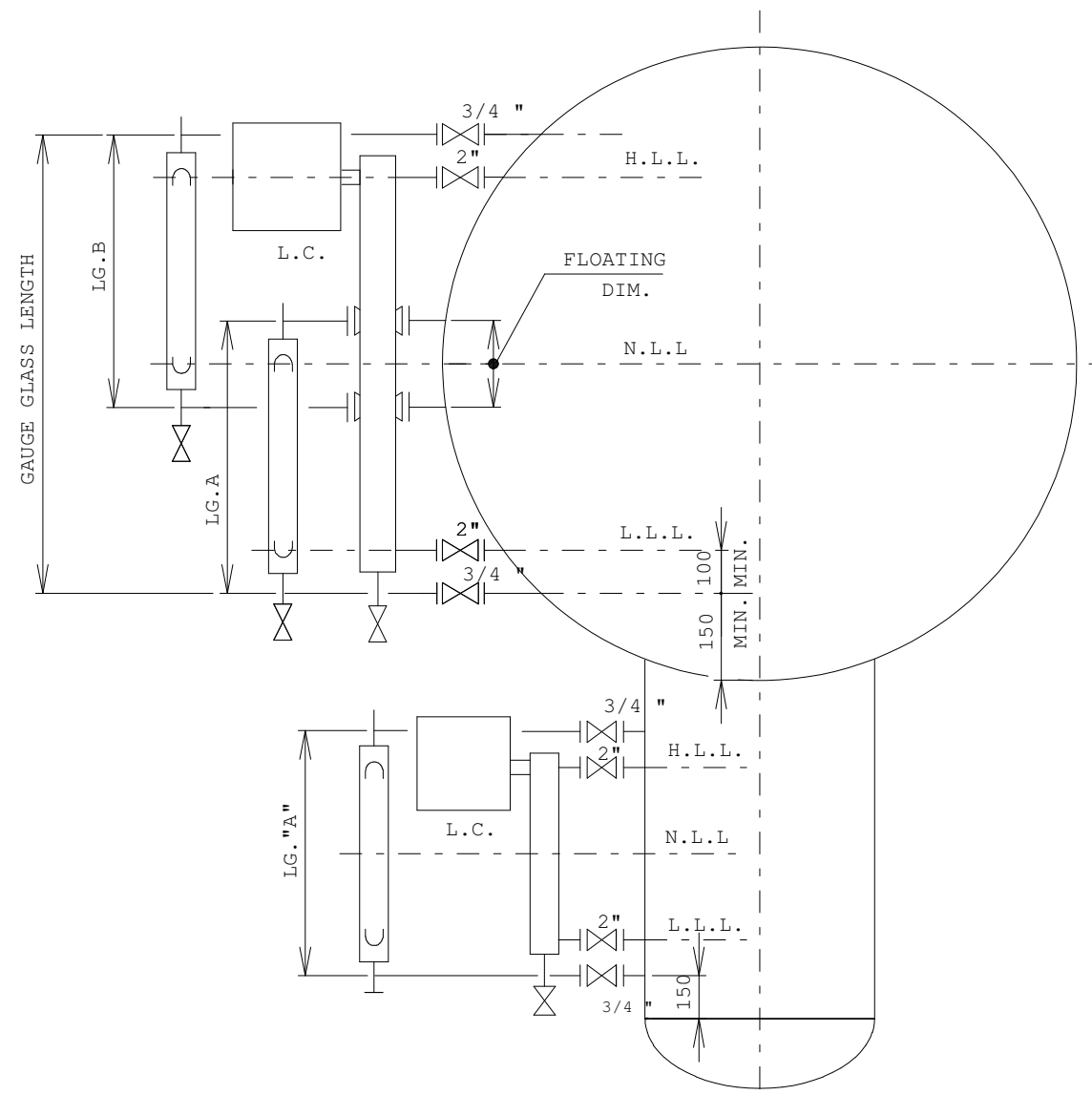


DIMENSIONS OF LEVEL CONN. ON HORIZONTAL DRUMS, WITHOUT THE USE OF STANDPIPES, NOZZLES ON HEAD OR SIDE OF DRUM
USE OF UP TO "4 SECTION" MODEL LEVEL GLASS

NEW DWG NO: BN-DG-K1-14

VESSEL DIA mm	LEVEL INSTR. RANGE		GAUGE GLASS ARRANGEMENT				VISIBLE LENGTH mm	GAUGE GLASS LENGTH mm
	INCH	mm	1	2	3	4		
			SECTION 508mm	SECTION 864mm	SECTION 1219mm	SECTION 1575mm		
500	—	—					—	—
600	—	—					—	—
700	14"	356					—	—
800	"	"	X				321 *	508
900	"	"	X				321 *	508
1000	"	"	XX				513	700
1100	"	"	XX				613	800
1200	"	"		X			679	864
1300	32"	813	X	X			835	1020
1400	"	"	X	X			915	1100
1500	"	"			X		1038	1219
1600	"	"		XX			1116	1300
1700	48"	1219		XX			1240	1425
1800	"	"		XX			1316	1500
1900	"	"				X	1397	1575
2000	"	"		X	X		1518	1700
2100	60"	1524		X	X		1618	1800
2200	"	"		X	X		1700	1882
2300	"	"			XX		1820	2000
2400	72"	1829			XX		1920	2100
2500	"	"			XX		2020	2200
2600	"	"			X	X	2120	2300
2700	84"	2134			X	X	2220	2400
2800	"	"			X	X	2320	2500
2900	"	"			X	X	2415	2595
3000	96"	2438				XX	2520	2700



NOTE : GAUGE GLASS LENGTH TO BE LOCATED SYMMETRICALLY OVER CONTROLLER RANGE

DIMENSIONS OF LEVEL CONN. ON HORIZONTAL DRUMS, WITHOUT THE USE OF STANDPIPES, NOZZLES ON HEAD OR SIDE OF DRUM
USE OF UP TO "3 SECTION" MODEL LEVEL GLASS

1900	48"	1219		XX			1346	1530
2600	72"	1829			XX		2056	2240
2700	84"	2134	X		XX		221	2400
2800	"	"	X		XX		2317	2500
2900	"	"	X		XX		2367	2545
3000	96"	2438		X	XX		2520	2700

I	GM	CERTIFIED		
Iss	Date	By	Description of issue	Ch'k' App'd

INSTRUMENT CONNECTIONS ON VESSELS

A
8/12-'67

This drawing is not to be used for construction or for ordering material unless dated and signed		Scale ~	
Approvals			
Certified	Design	Eng'r	
Date 18 DEC. 1967			

