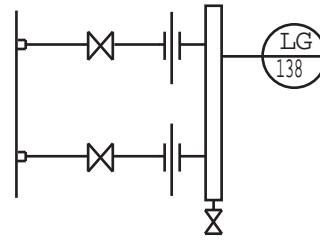


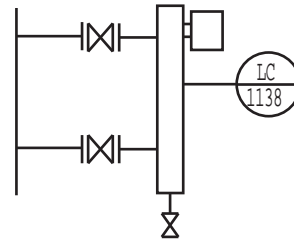
1. All special items (not normally included in piping specifications) shall be identified by mark numbers or notes. Do not enclose marks in circles.

The following are some typical examples :-

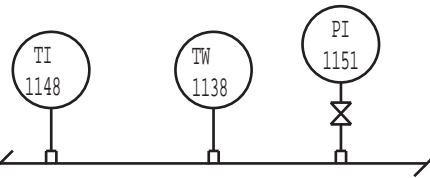
Level Glass



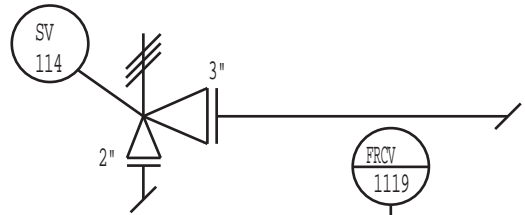
Level Controller



PI'S, TI'S, TW'S, etc.



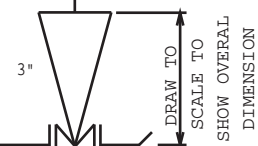
Safety Valve



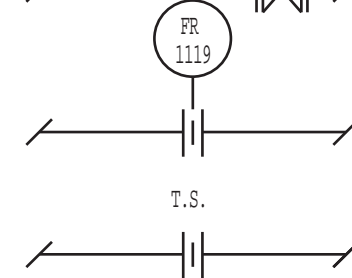
Control Valve



Orifice



Temporary Strainer



ATTACHMENT "B"

<p>ID. NO.</p> <p>www.red-bag.com</p>	<p>ISSUE</p> <p>1</p>	<p>SHEET</p> <p>2 of 3</p>	<p>DOC.NO.</p> <p>BN-DG-C3</p>
---------------------------------------	-----------------------	----------------------------	--------------------------------